

Prenatal exposure to air pollution linked to impulsivity, emotional problems in children

March 17, 2016

Exposure to common air pollutants during pregnancy may predispose children to problems regulating their thoughts, emotions, and behaviors later on, according to a new study led by researchers at the Columbia Center for Children's Environmental Health within Columbia University's Mailman School of Public Health and New York State Psychiatric Institute. The new study is the first of its kind to examine the effects of early life exposure to a common air pollutant known as PAH (polycyclic aromatic hydrocarbons) on self-regulating behaviors and social competency that incorporates multiple assessment points across childhood. Children with poor self-regulation skills have difficulty managing disruptive thoughts, emotions, and impulses; poor social competency limits their ability to get along with others. The study appears in the *Journal of Child Psychology and Psychiatry*.





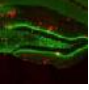
PAH are ubiquitous in the environment from emissions from motor vehicles; oil, and coal burning for home heating and power generation; tobacco smoke; and other combustion sources. (More on PAH and ways to limit exposure can be found on the CCCEH website.) Prenatal exposure to PAH has been associated with ADHD; symptoms of anxiety, depression and inattention; and also behavioral disorders, which are all thought to be related to deficits in self-regulation.

Lead investigator Amy Margolis, assistant professor of medical

psychology in the Department of Psychiatry at Columbia University Medical Center and New York State Psychiatric Institute, and colleagues analyzed maternal blood samples and child tests results from 462 mother-child pairs, a subset of CCCEH's ongoing urban birth cohort study in New York City, from pregnancy through early childhood. Maternal exposure to PAH was determined by presence of DNA-PAH adducts in a maternal blood sample.

Children were tested with the Child Behavior Checklist at ages 3-5, 7, 9, and 11. Scores obtained from the CBCL were used to create a composite score for the Deficient Emotional Self-Regulation Scale (DESR), and higher scores on the DESR indicated reduced capabilities to self-regulate. Investigators found that children whose mothers had higher exposure to PAH in pregnancy had significantly worse scores on the DESR at ages 9 and 11 than children whose mothers had lower exposure to PAH in pregnancy. Over time, low-exposure children followed a typical developmental pattern and improved in self-regulatory function, but the high-exposed children did not, underscoring the long-term effect of early-life exposure to PAH. Additionally, researchers found that DESR score had a mediating effect on tests of social competence, indicating that self-regulation is an important factor in developing social competence.

The evidence that prenatal exposure to PAH leads to long-term effects on self-regulatory

Featured	Last comments	Popular
	New way to harvest stem cells better for donors	Mar 15, 2016 0
	Hidden in plain sight: Well-known drug could yield new treatment for herpes viruses	Mar 14, 2016 1
	Mindfulness meditation provides opioid-free pain relief, study finds	Mar 15, 2016 1
	Complex learning dismantles barriers in the brain	Mar 15, 2016 0
	'Lost' memories can be found	Mar 16, 2016 3

[more »](#)

Medical Xpress on facebook

MedicalXpress.com

- top Help Science X Account Cancer / Oncology
- Home About us Sponsored Account HIV & AIDS news
- Search FAQ Newsletter Immunology news
- Mobile version ontact RSS feeds Genetics news

Connect

Explore further: [Prenatal exposure to air pollution linked to childhood obesity](#)

Journal reference: [Journal of Child Psychology and Psychiatry](#)

10 shares

[feedback to editors](#)

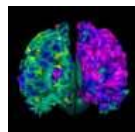
Provided by: [Columbia University's Mailman School of Public Health](#)

Related Stories

Prenatal exposure to air pollution linked to childhood obesity

April 16, 2012

Overall, 17% of children in the United States are obese, and in inner-city neighborhoods, the prevalence is as high as 25%. While poor diets and physical inactivity are the main culprits, there is new evidence that air pollution ...



Prenatal exposure to common air pollutants linked to cognitive and behavioral impairment

March 25, 2015

Researchers at the Institute for the Developing Mind at Children's Hospital Los Angeles (CHLA) and colleagues at Columbia University's Center for Children's Environmental Health have found a powerful relationship between ...

Recommended for you



Chemical may be new tool for depression therapy

March 14, 2016

A chemical discovered in the Bruce Hammock laboratory at the University of California, Davis, may be a new, innovative tool to control depression, a severe and chronic psychiatric disease that affects 350 million persons ...



Psychologist shows that while environmental intervention can raise general intelligence, the effects aren't permanent

March 14, 2016

Scientists have long agreed that we humans are a complex combination of our inherited traits and the environments in which we are raised. How the scales tip in one direction or the other, however, is still the subject of ...

0 comments

Please sign in to add a comment. Registration is free, and takes less than a minute. [Read more](#)

Sign in

[Click here to reset your password.](#)
[Sign in to get notified via email when new comments are made.](#)