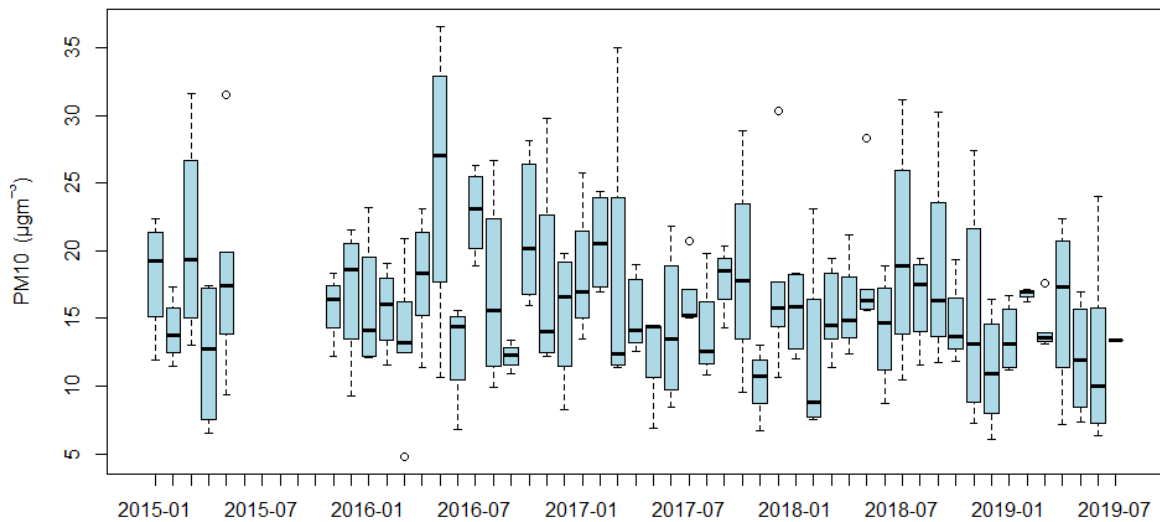
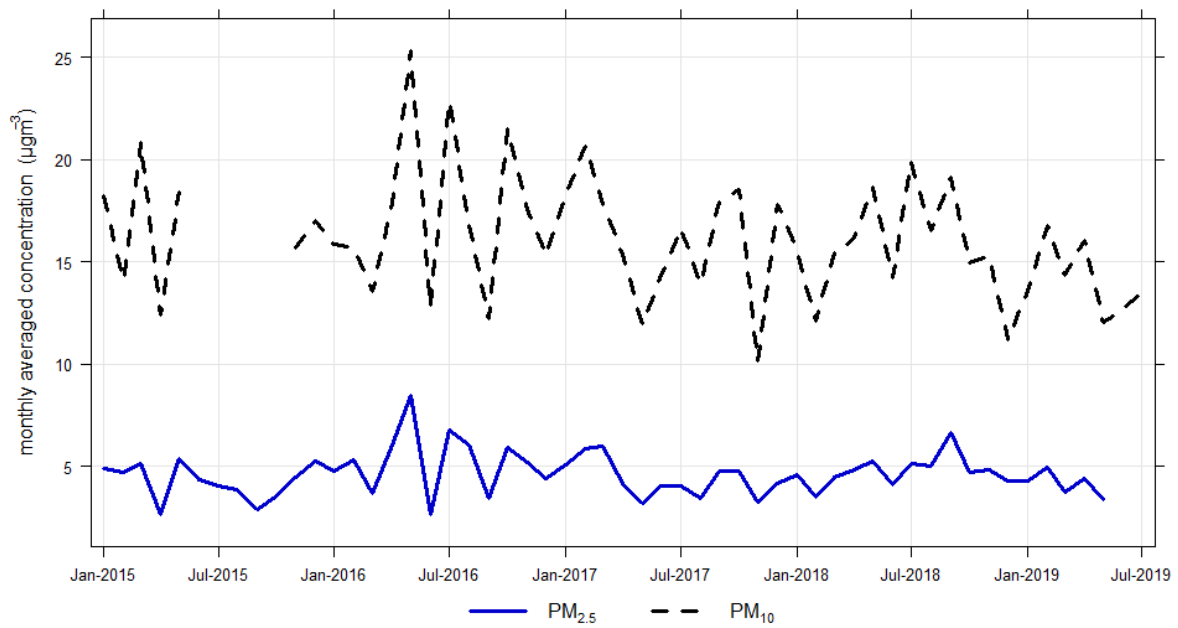


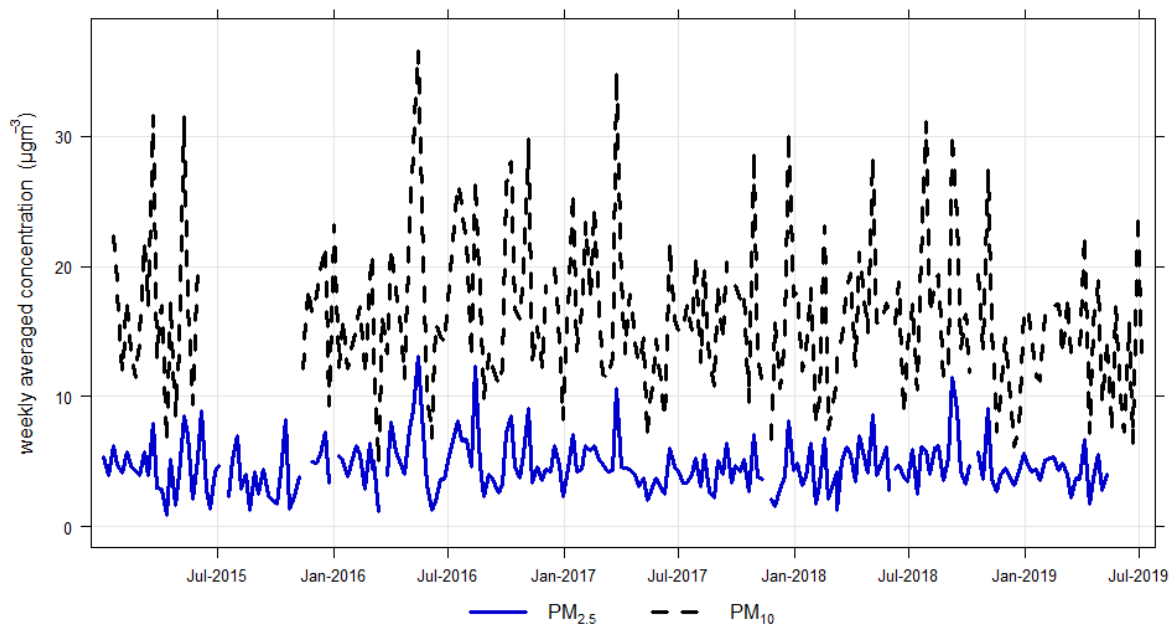
Box and whisker plots of monthly PM2.5 concentrations. Samples were collected over 7 days under baseline conditions (wind direction in the sector 190-280 and particle number concentration below a seasonally determined threshold). The dark line in each box is the average concentration, the bottom and top of the box represent the 1<sup>st</sup> and 3<sup>rd</sup> quartile. The whiskers represent the minimum and maximum values and the circles represent outliers.



Box and whisker plots of monthly PM10 concentrations. Samples were collected over 7 days under baseline conditions (wind direction in the sector 190-280 and particle number concentration below a seasonally determined threshold). The dark line in each box is the average concentration, the bottom and top of the box represent the 1<sup>st</sup> and 3<sup>rd</sup> quartile. The whiskers represent the minimum and maximum values and the circles represent outliers.



Monthly averaged PM<sub>10</sub> and PM<sub>2.5</sub> concentrations. Samples were collected over 7 days under baseline conditions (wind direction in the sector 190-280 and particle number concentration below a seasonally determined threshold).



PM<sub>10</sub> and PM<sub>2.5</sub> concentrations. Samples were collected over 7 days under baseline conditions (wind direction in the sector 190-280 and particle number concentration below a seasonally determined threshold).