

## 4.10.2010 Smoke Watch

Mon Oct 04, 2010 11:06 pm

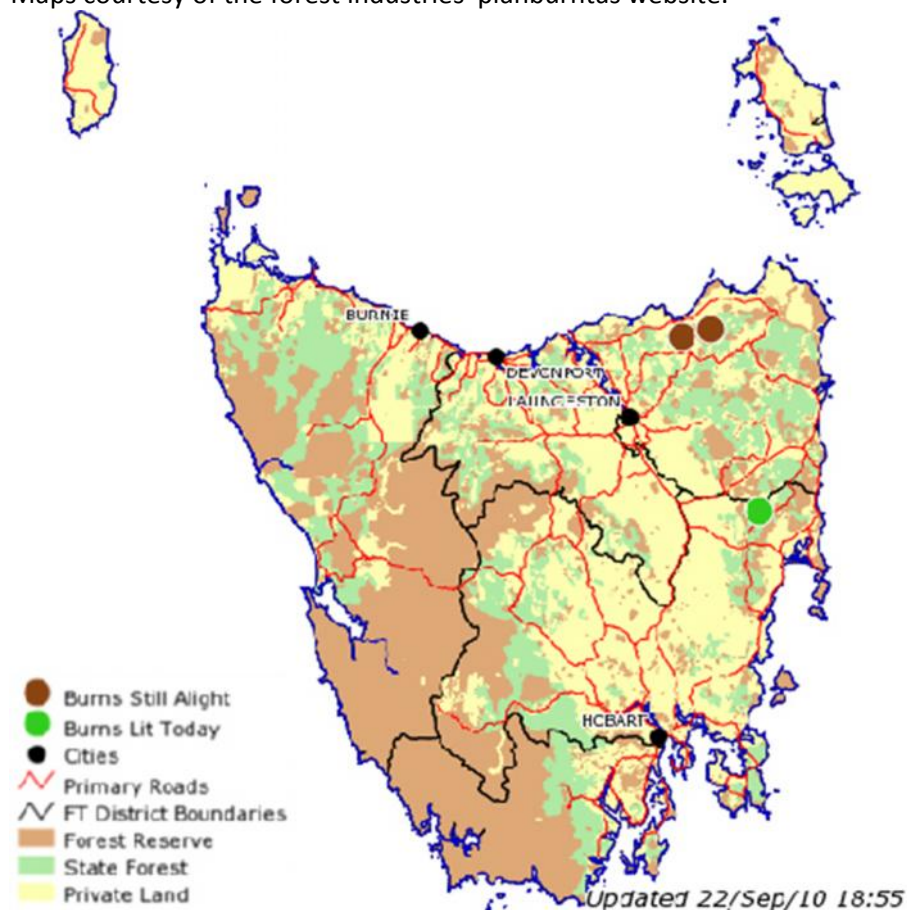
This burn down the East coast was lit on the 22/9/10.

It is still shown as currently burning as I write this on the 4/10/2010.

This is an awful long time for people and our animals to be having to put up with the smoke.

It also shows that these burns do not extinguish on the same day as they are lit.

Maps courtesy of the forest industries' planburntas website.



This burn was lit on the 22/9/2010

current\_ft\_burns22.9.10b...24.jpg (208.35 KiB)

---

Re: 4.10.2010 Smoke Watch

Wed Oct 06, 2010 3:40 pm

There is more to this burn....

We have heard earlier when this burn was lit and how long it has been burning .

Yesterday, one day later (5/10/2010) it turned into a burn that had just been lit yesterday.

This morning (6/10/10) it turned back into a proposed burn for today.

On ABC Northern Tas radio this morning there was a news item released by Forestry Tas saying that weather conditions were right for burning today. They said they would be doing planned burning today on the east coast near Royal George, and they had done trial? burning in that area in September.

One figured the news item could have been old because the burn had been lit yesterday, so the ABC was phoned and they confirmed a news report had come from Forestry Tas at 9.18am today (6/10) to say they would be burning today.

Let's recap...

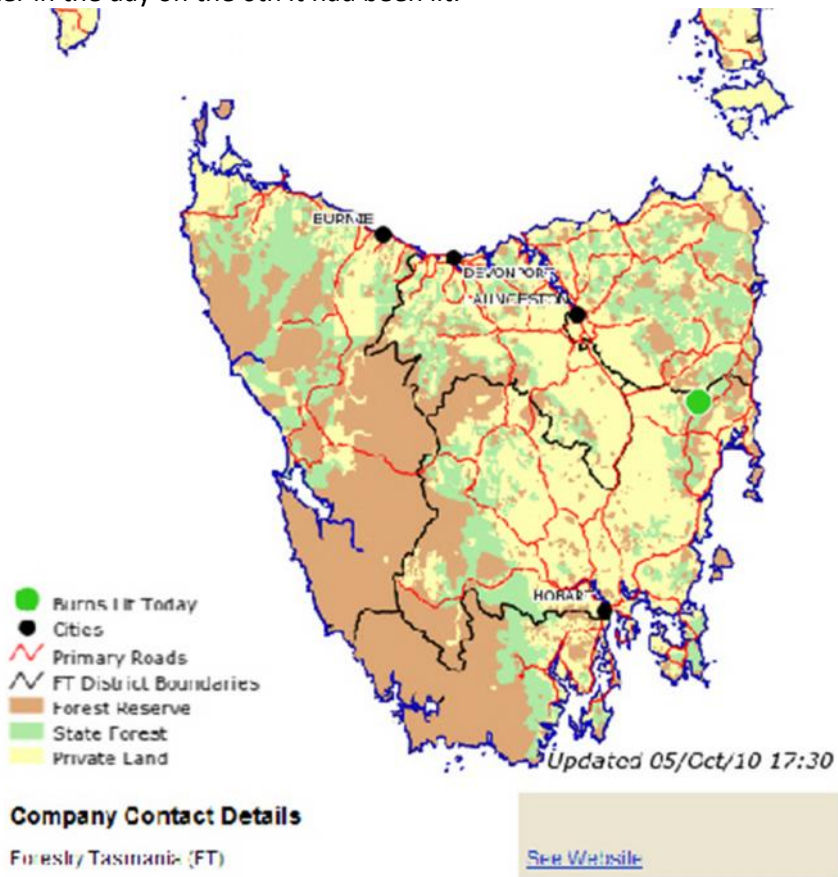
This burn was lit on the 22/9

It smouldered up until late on the 4/10

On the 5/10 it was lit.

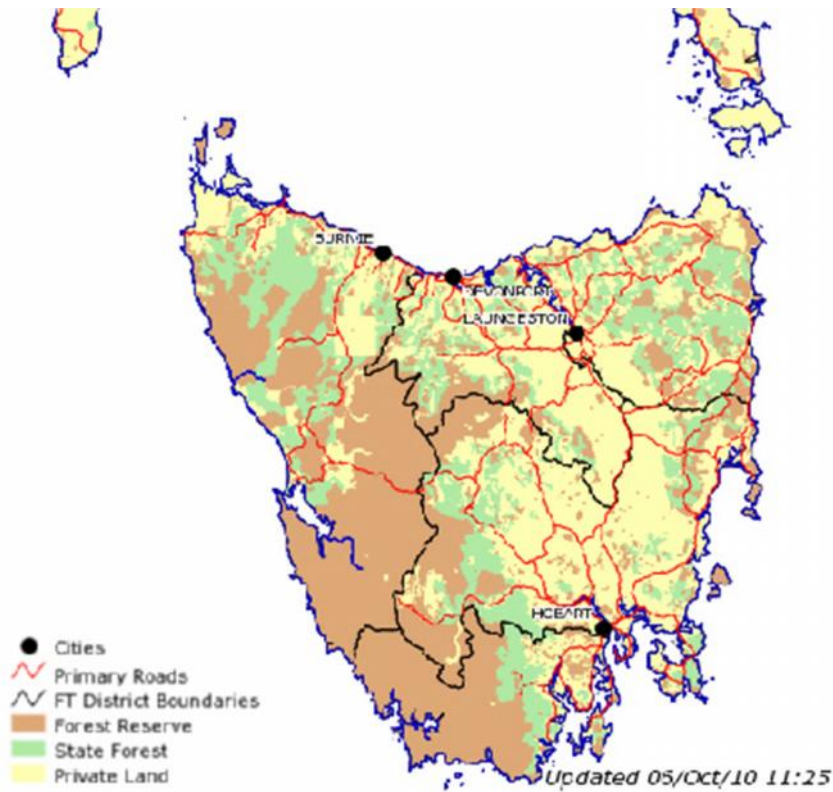
On the morning of the 6/10 it was back to being just a proposed burn.

Later in the day on the 6th it had been lit.



Shows the burn was lit on the 5th

currentFTburns5.10.10a...17.35.jpg (210.46 KiB) Viewed 499 times

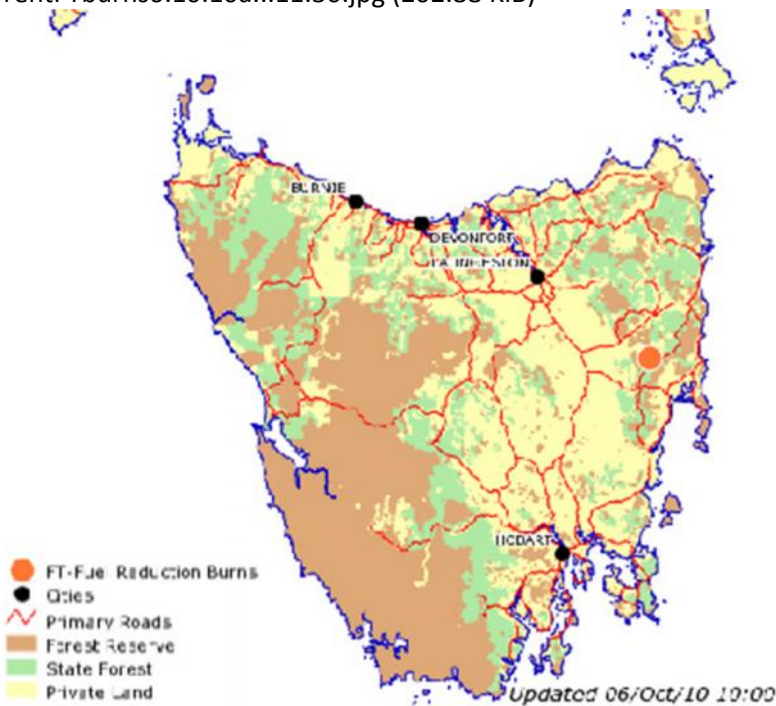


#### Company Contact Details

Forestry Tasmania (FT)

[See Website](#)

At 11.30 am on the 6th it didn't exist  
 currentFTburns6.10.10a...11.30.jpg (202.88 KiB)

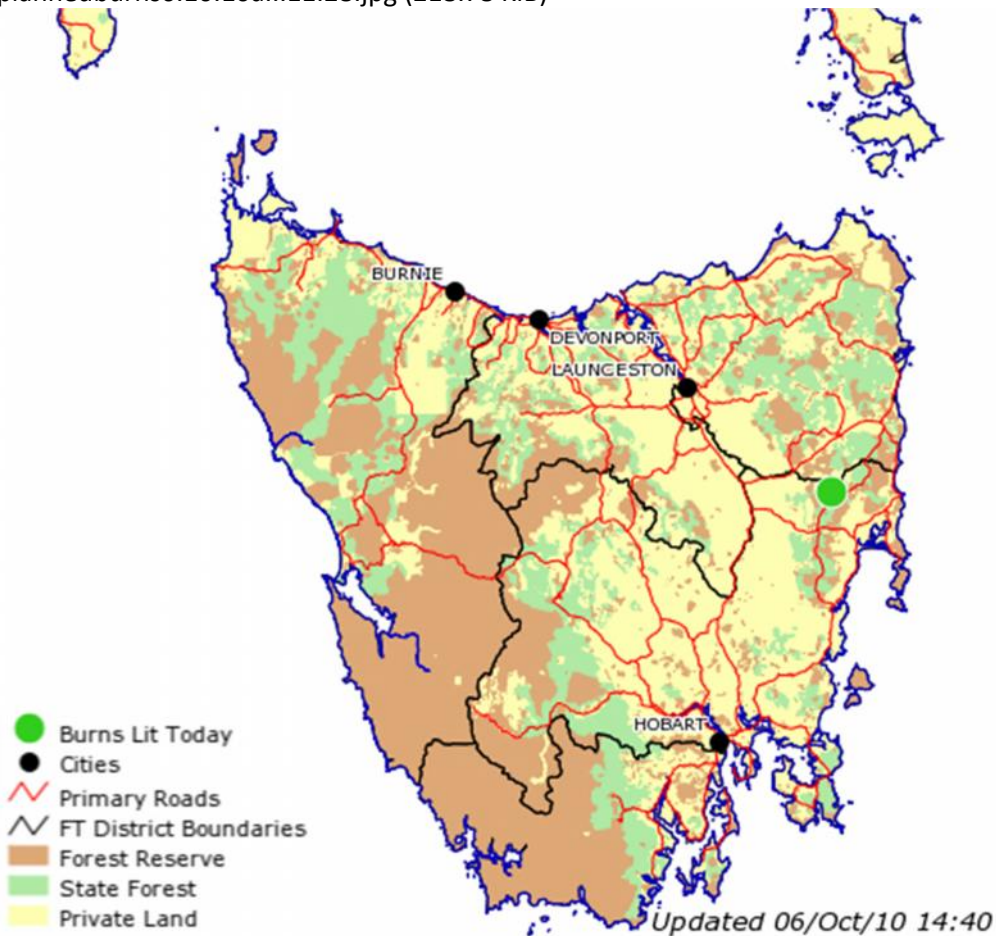


This map is updated daily between 10:00 am and 10:05am and at other times as required to reflect on the date and time of the last update are shown at the foot of the map.

Disclaimer: Planned burns are part of an **industry-wide program**.

These are the approximate locations of burns planned by [Forestry Tasmania](#) (-) and members of the (FIAT)

it was proposed to be lit on the 6th  
plannedburns6.10.10a...11.28.jpg (218.78 KiB)



### Company Contact Details

Forestry Tasmania (FT)

[See Website](#)

Now it is lit later on the 6th!  
currentFTburns6.10.10b...14.43.jpg (263.66 KiB)  
Help! We have lost a burn!  
Has anyone seen our burn?  
It was going yesterday.  
Going where yesterday?  
Well it was smouldering for a couple of weeks before that.  
Looks like it's lost, let's propose another one.  
Hope the other one is out, we can say it is I suppose.  
Got your matches?  
I used a few up yesterday because the wood was damp.  
Here you go, have a couple left for today.  
Dern rain, wood is smoky isn't it?