

21.10.2010

Tue Oct 26, 2010 1:30 pm

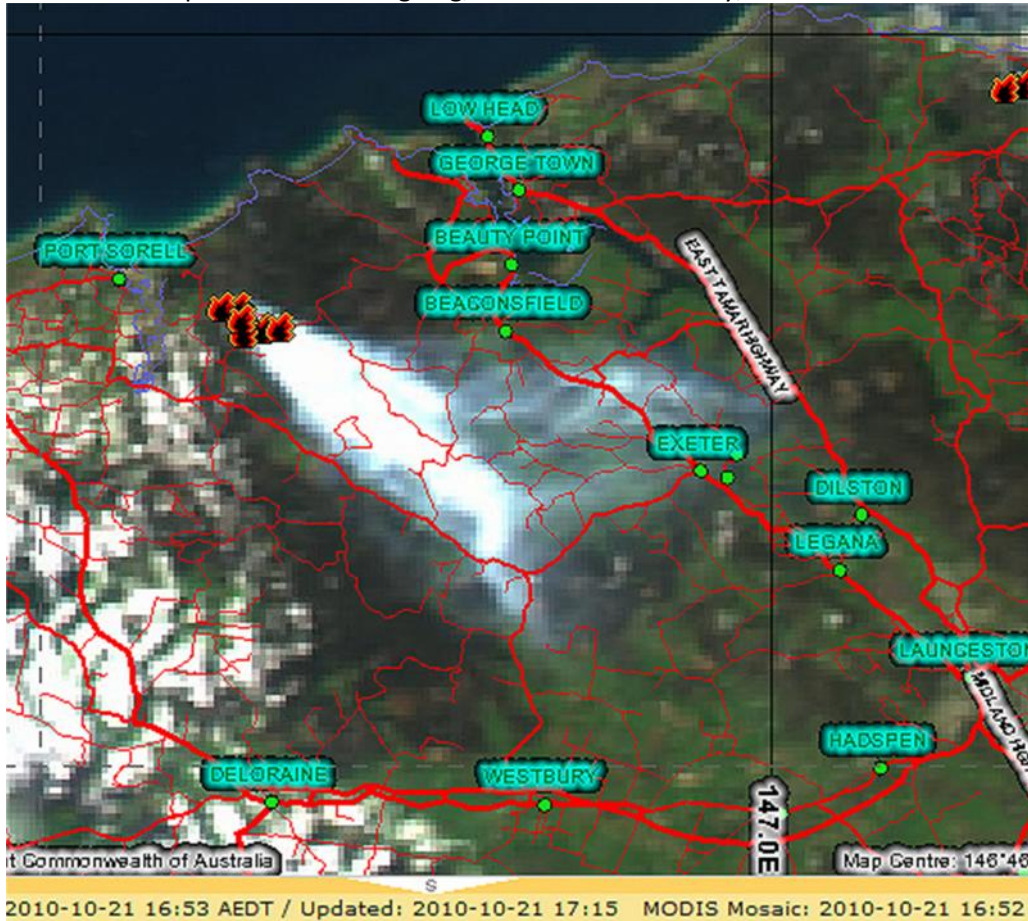
Smoke that made breathing difficult.

Forestry Tasmania have apologised but the damage has been done.

We woke up to this smoke and it continued right throughout the day from yesterday.

It certainly was that thick at breathing level and no way could you escape it.

The additional private burns still going, and the ones lit today, are not shown on the FT maps



The smoke was choking. It was hard to breathe in the house.

sentinel21.10.10e...17.15AEDT.jpg (496.57 KiB)



5.52pm. Looking north out of the smoke in Grindelwald into more smoke in our the Tamar Valley
img_0384a.jpg (103.62 KiB)



5.51pm. Much smoke looking west from Brady's Lookout
img_0381a.jpg (114.91 KiB)



7.24am. Looking S/E from Grindelwald over the city of Launceston
img_0374a.jpg (104.38 KiB)



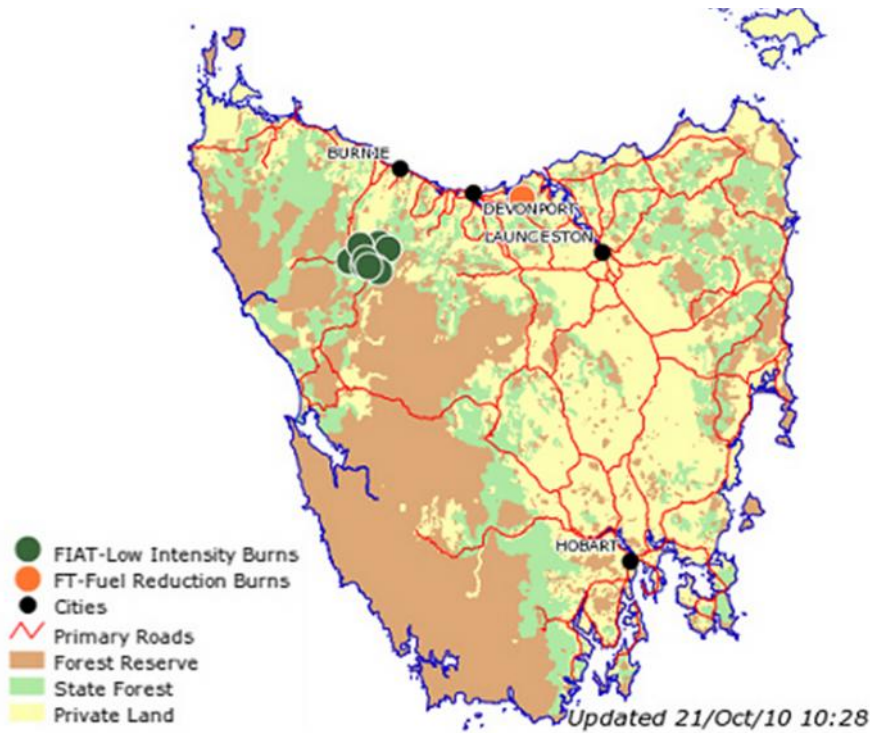
7.13 am Smoke to the West of Brady's Lookout
img_0369a.jpg (150.77 KiB)



This shot shows Grindelwald smoked out. Taken from 3Km away at Brady's Lookout at 7.10 am
img_0363a.jpg (146.68 KiB)



Thick smoke everywhere in the Tamar Valley. Taken from Brady's Lookout at 7am.
img_0361a.jpg (144.12 KiB)



This map is updated daily between 10:00 am and 10:05am and at other times as required to r
 The date and time of the last update are shown at the foot of the map.

Disclaimer: Planned burns are part of an **industry-wide program**.
 These are the approximate locations of burns planned by [Forestry Tasmania](#) (FT) and memb
 (FIAT).

Information on burns planned by other organisations may be found at the [Tasmania Fire Ser](#)
 See also: [Tourism Forestry Protocol](#).

Company Contact Details

Forest Enterprises Australia (FIAT member)

(03) 6334 7811

planned burns at 13.27 today
 plannedburns21.10.10...13.27a.jpg (296.36 KiB)