

Smokewatch 21/4/2010 - 22/4/2010

Fri Apr 30, 2010 10:33 pm

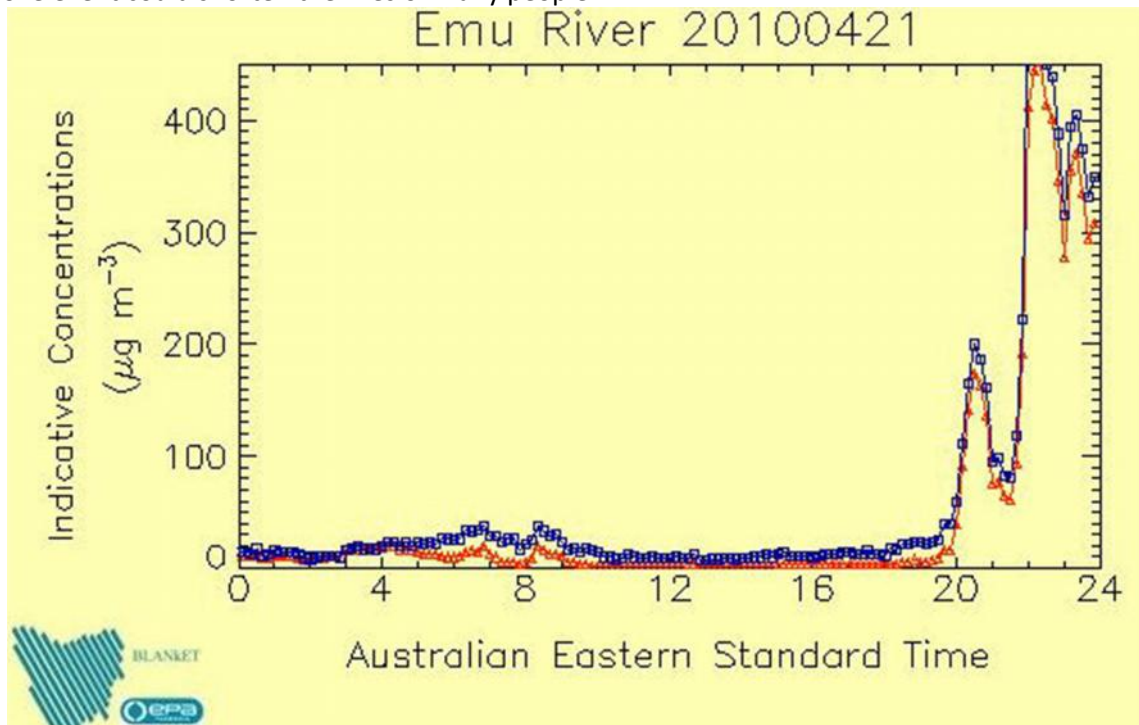
Smoke levels were extremely high in the N/W of Tasmania on these two days.

It seems the smoke came from two planned burns in the area (see two green dots on the map) when private forestry were burning their forest waste.

Indicative air monitoring readings were much higher than the PM2.5 24 hour reporting standard of 25 $\mu\text{g}/\text{m}^3$ and the PM10 24hour Standard of 50 $\mu\text{g}/\text{m}^3$. They peaked at about 1000 $\mu\text{g}/\text{m}^3$.

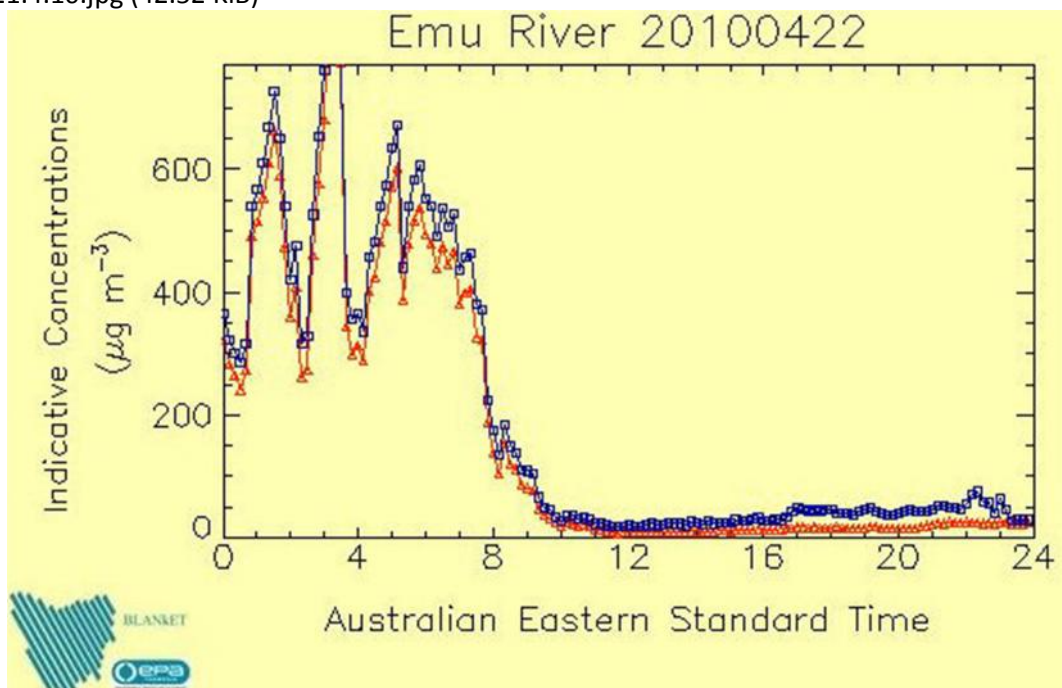
The EPA is investigating this breach, but I doubt very much it will come to anything for reasons best left at this time. Read the ABC's report at: [http://www.cleanairtas.com/pdf/Burnie%20... 2.4.10.pdf](http://www.cleanairtas.com/pdf/Burnie%20...%202.4.10.pdf)

This smoke event could shorten the lives of many people.



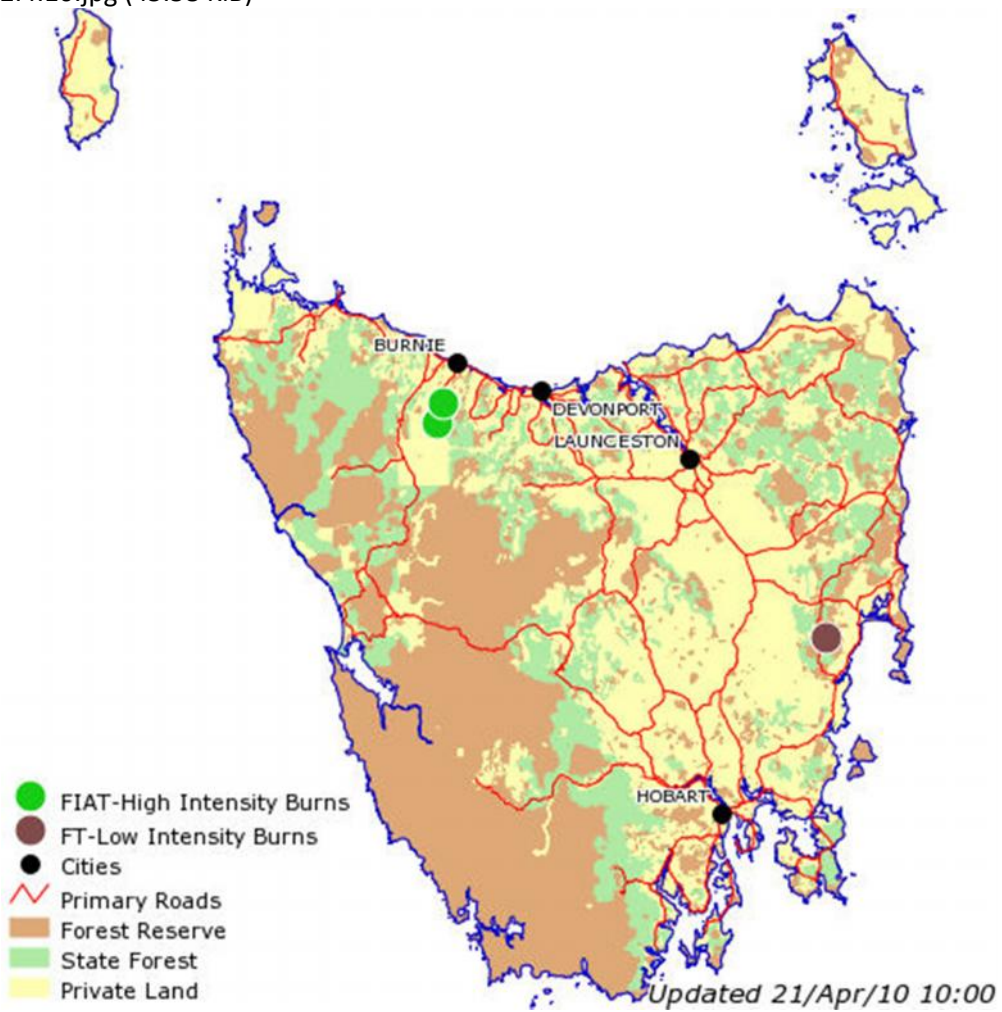
The first day of the burns. Ambient air charts courtesy of the EPA

Burnie21.4.10.jpg (42.52 KiB)



The smoke kept coming. It was extremely dangerous at these levels.

Burnie22.4.10.jpg (45.58 KiB)



Private forestry planned burns (green dots).
planned_burns_today21.4.10.jpg (71.65 KiB)