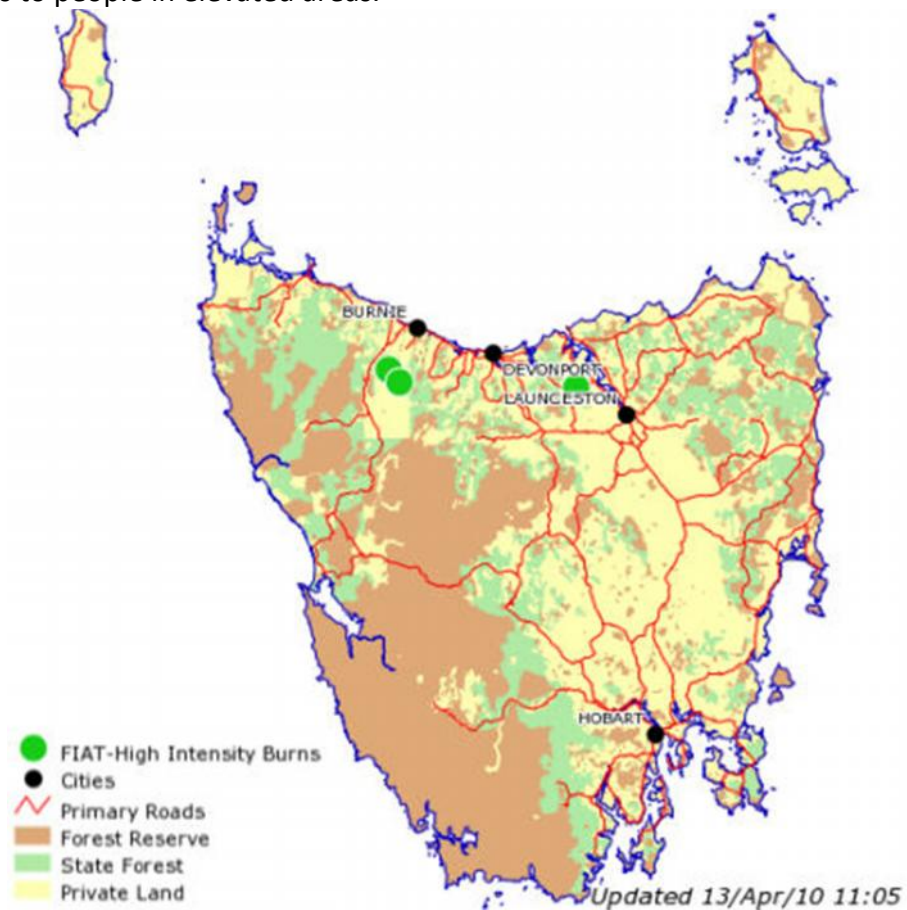


## Smokewatch 13.4.2010

Wed Apr 14, 2010 2:39 pm

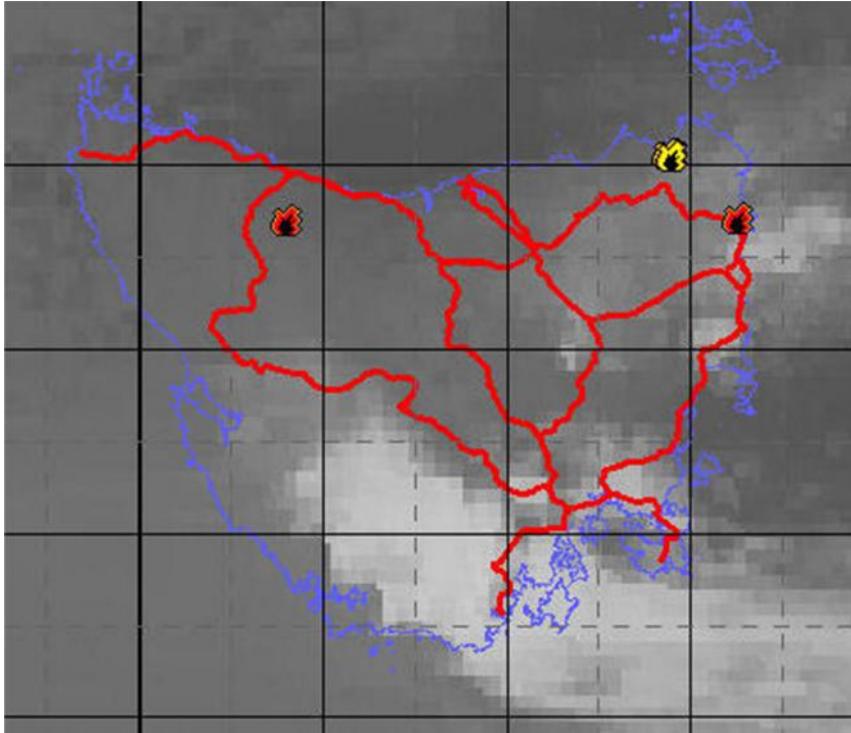
Smoke was in the Tamar valley for most of the day but became obnoxious from about 4pm onwards.

It seems like it was not recorded by the air monitoring stations in the valley but did cause distress to people in elevated areas.



FIAT burns today.

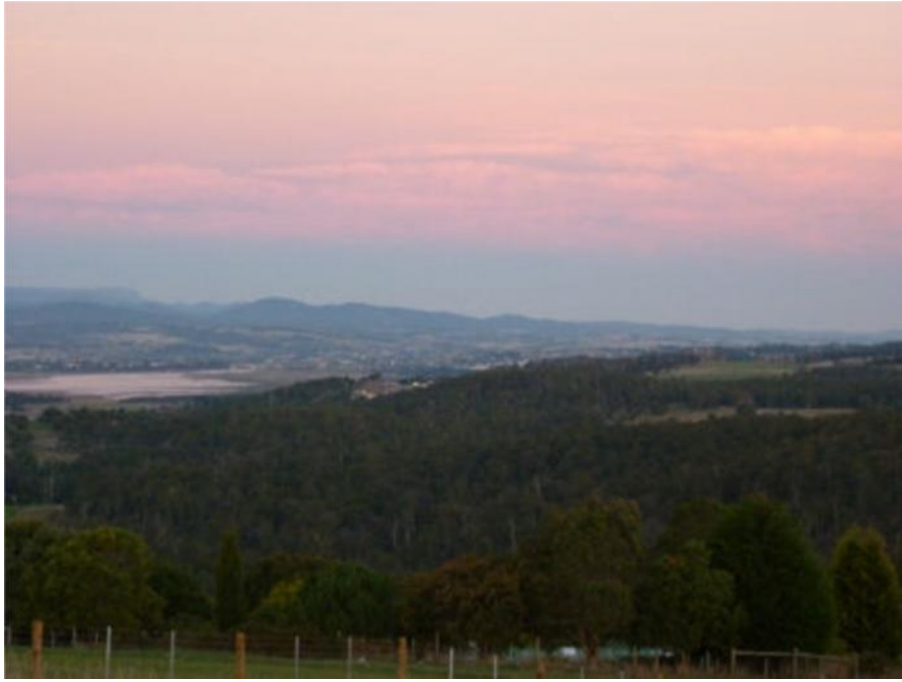
planned\_burns\_today13.4.10a....16.54.jpg (50.68 KiB)



1600hrs satellite image  
sentinel13.3.10...16.41 AEST.jpg (38.16 KiB)



1500 hrs satellite image  
Aqua13.4.10...15.00AEST.jpg (23.04 KiB)



Smoke was around Launceston and the hills all day. It turned a funny colour before sunset.  
P1010062a.jpg (31.92 KiB)



1700hrs. Another new source of smoke was rising from the N/W and heading eastwards.  
P1010066a.jpg (23.03 KiB)



Smoke was rising from the West  
P1010052a.jpg (28.48 KiB)