

Fire and Smoke

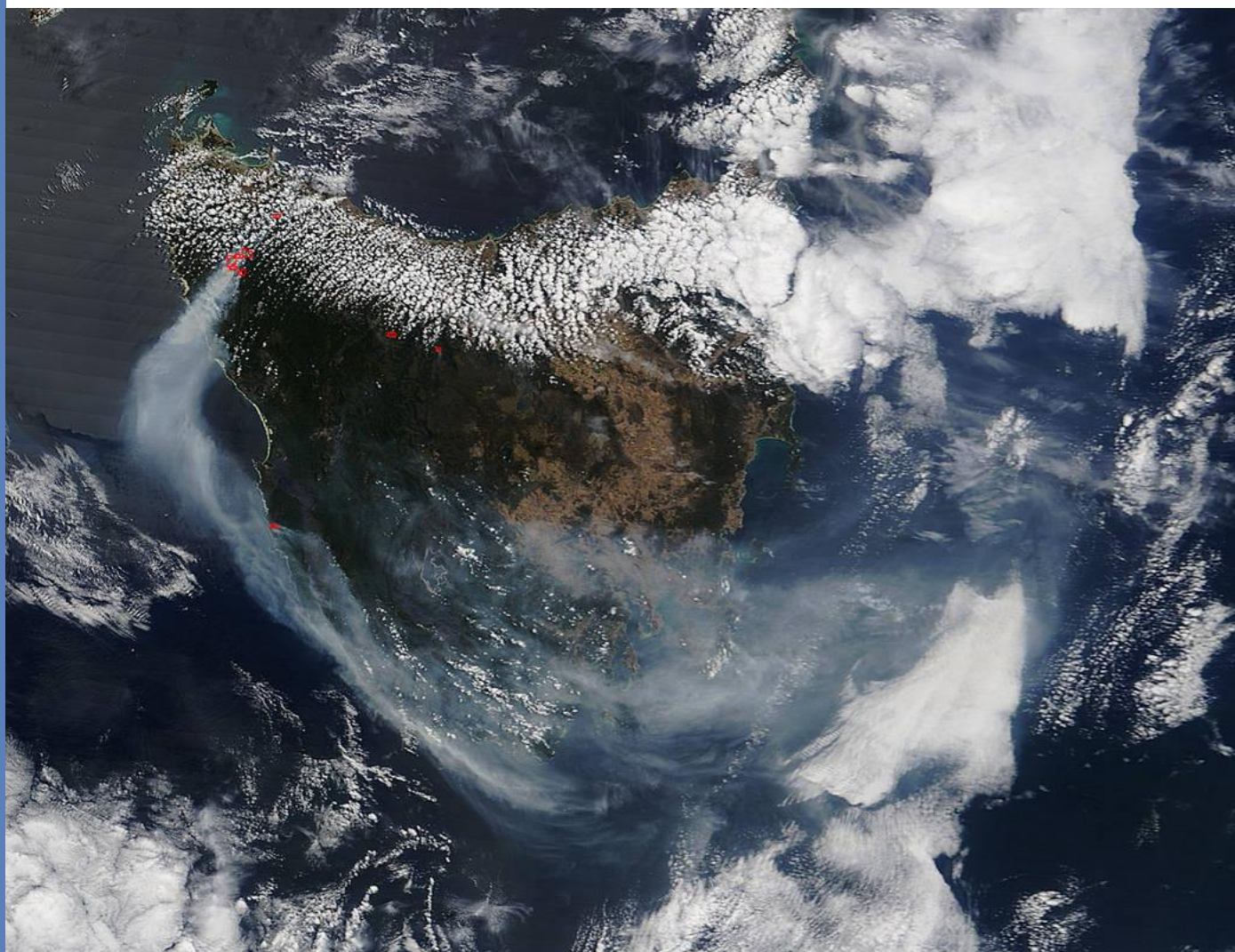
(<http://www.nasa.gov>

[/mission_pages/fires](#)

Jan. 20, 2016

[/main/](#))

NASA's Terra Satellite Tracks Fires on Tasmania



(/sites/default/files/thumbnails/image/tasmania.a2016017.0040.500m.jpg)

Several hot spots on the island of Tasmania were detected by the MODIS instrument on the Terra satellite. Each hot spot, which appears as a red mark, is an area where the thermal detectors on the MODIS instrument recognized temperatures higher than background. When accompanied by plumes of smoke, as in this image, such hot spots are diagnostic for fire.

NASA's Terra satellite collected this natural-color image with the Moderate Resolution Imaging Spectroradiometer, MODIS, instrument on January 17, 2016. NASA image courtesy Jeff Schmaltz